



Young Hackney Substance Misuse Service

Needs Assessment

The Needs Assessment carried out in 2014 highlighted the following key areas for improvement and development:

- Lack of existing service provision for 19 – 25 year old age group
- Little work with Children affected by parental substance misuse (Hidden Harm)
- It was reported that there were a low number of self-referrals into many Young Hackney services
- Low number of referrals from schools and health professionals

Our Response

- 1. To increase our capacity to cater for the age range from 19 to 25 years of age**
- 2. To co-ordinate substance misuse and treatment activities alongside Children & Young People Services to support those children with parental substance misuse**
- 3. Improve the access into treatment & support to create clearer pathways**
- 4. To promote Education & Prevention within the education services and in doing so increase the profile of our service**

What We Do

- **Young Hackney provide a Substance Misuse Service which is centrally based at the Hackney Service Centre**
- **We are a dedicated community based service taking referrals from schools, colleges, parents and family members as well as a range of professionals from social services, youth offending teams, health professionals and of course young people themselves**
- **We aim to meet with all young people at a convenient and safe location which can encourage open and useful discussion to address their particular needs around drugs and alcohol**
- **We offer 1:1 psychosocial interventions, motivational interviewing and group work which is impartial, up to date, informed and evidence based and can help the young person better understand drugs and alcohol enabling them to make safer, positive choices about their lives**
- **We work with people aged 8 - 25 living, working or studying in Hackney and can extend this support to their families as well as those professionals involved in their day to day lives**
- **Our aim is to educate, inform and assist young people to reduce the risks of substance use and make healthy choices for life**

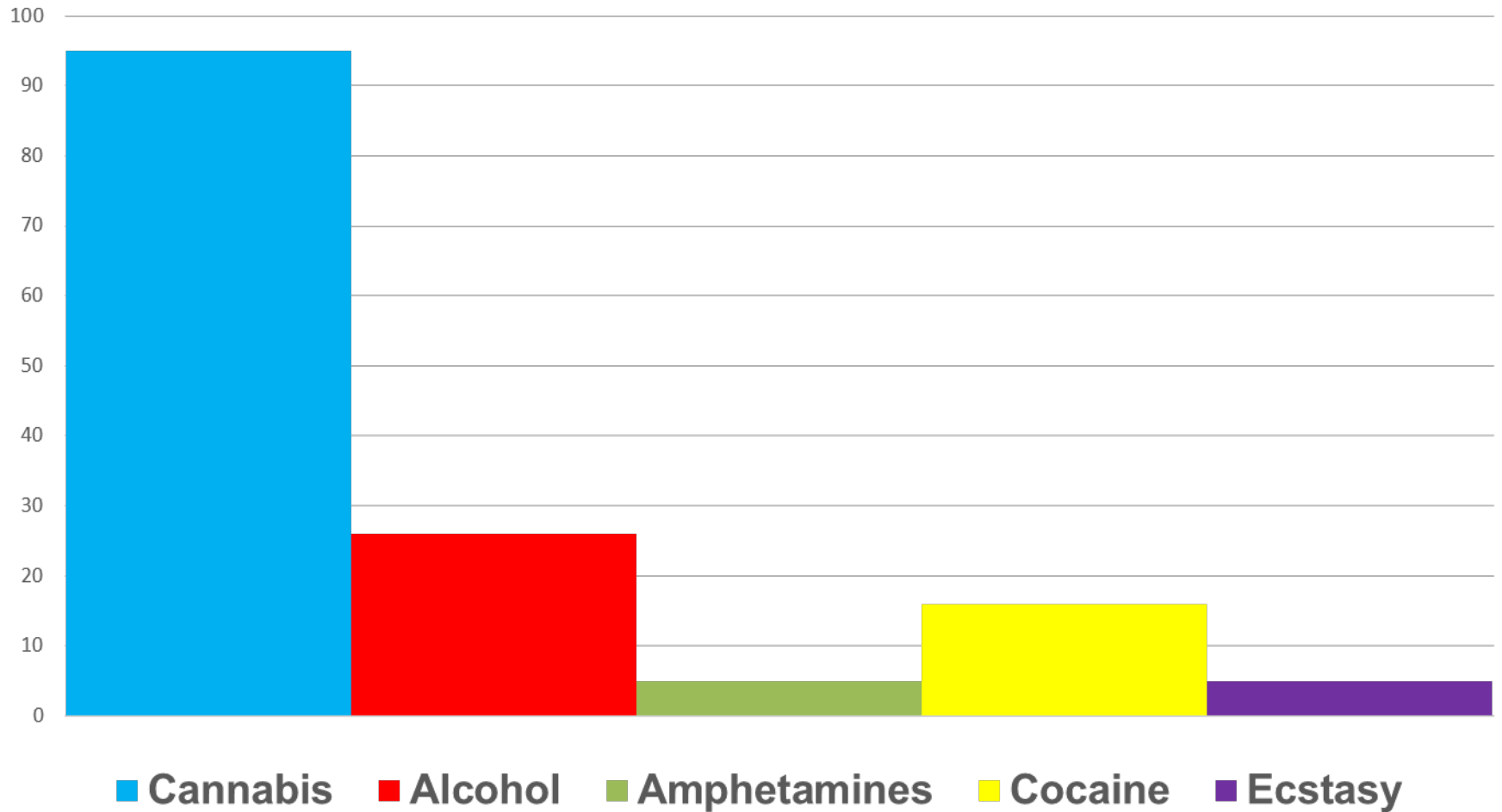
Our Criteria for Engagement

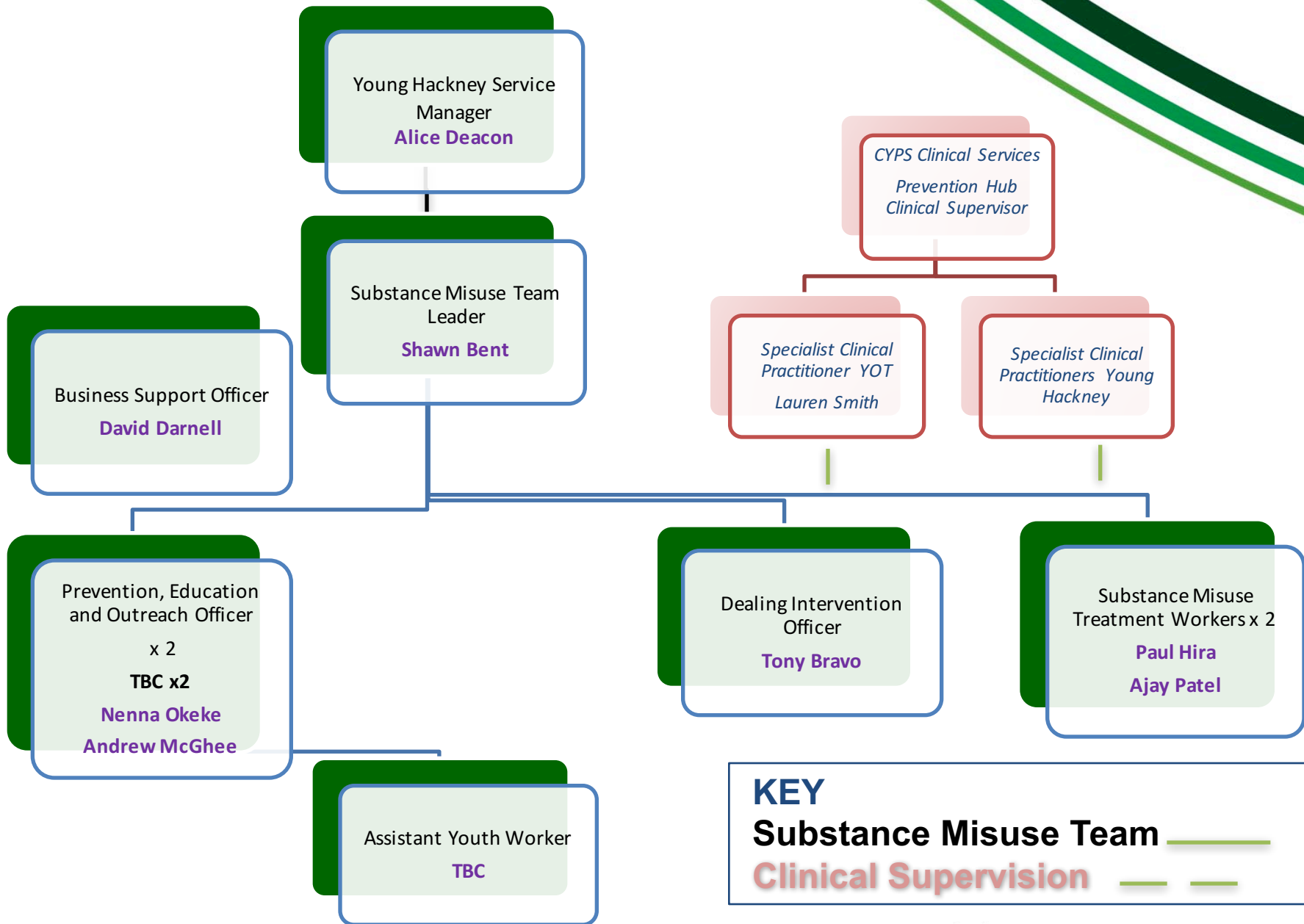
- Child or YP has disclosed or is known to be currently misusing substances: there is increasing evidence of a lack of control over their current use of the drug or alcohol indicating growing dependency (with associated withdrawal symptoms)
- Child or YP has disclosed or is known to be currently using substances: there is evidence of early or experimental use of the drug or alcohol which risks continued or problematic use, i.e. misuse and subsequent dependency
- Child or YP is at some discernible risk of substance use from within his/her current peer group, social circle or from the familial or care setting (hidden harm) and subsequently requires specific, targeted intervention, i.e. education, harm reduction, self-management
- Child or YP has complex learning needs which raise their vulnerability to substance use and is known to CYPS requiring a multi-disciplinary or systemic approach to ongoing care
- Child or YP has disclosed historic substance use and whilst currently abstinent, may demonstrate *potential* vulnerability to lapse or relapse requiring; targeted intervention e.g. psycho-social or harm minimisation work, or a multi-disciplinary approach alongside our appropriate partner agencies to reduce identified risk and restore stability
- YP is open to Hackney Recovery Service for appropriate substitution therapy but requires additional psycho-social input such as broad reach key-working or onward referral to YH

Substances We Work With

- **Alcohol – 28%**
- **Amphetamines – 6%**
- **Cannabis - 95%**
- **Cocaine – 15%**
- **Crack**
- **Crystal Meth**
- **Ecstasy – 5%**
- **Heroin**
- **LSD**
- **Magic Mushroom**
- **Solvents; Gas e.g. Nitrous Oxide, Aerosols, Glue**
- **Tobacco – Unspecified amount as shared with the Smoking Cessation Service**

Hackney Drug Statistics Last Quarter 2016





KEY
Substance Misuse Team ———
Clinical Supervision - - -

YHSMS Team

Substance Misuse Treatment Worker x 2

Provide effective support, targeted and specialist interventions to a caseload of complex clients, 1:1's, community work

Dealing Intervention Officer

Dealing Intervention Officer Contribute to prevention of offending by supporting YP subject to court orders and prevention programmes, 1:1's, working alongside the IGU, as well as YOT

Prevention, Education & Outreach Officer x 2

Design, organise and deliver creative interventions to increase understanding around risks and build resilience. Identify opportunities for proactive outreach, 1:1 work, Workshop and Group works and training for those who engage with young people

Partnerships & Stakeholders

Young Hackney

- Youth Hubs
- Prevention & Diversion
- Sports & Participation
- Universal services
- Connecting Young Hackney
Commissioned providers

Statutory Services

- Public Health
- FAST Team
- Social Care
- YOT Courts
- Integrated Gangs Unit
- Probation
- CAMHS
- LAC Health
- Schools
- Homerton Hospital

Voluntary Services

- Off Centre
- One Housing
- Hackney CVS
- Shelter
- SDA Church

Partnership Services

- WDP/Hackney
Recovery Service
- IGU Commissioned providers
- CHYPS Plus
- Safeguarding School Nurses
- Family Support Unit



**Young Hackney
Substance Misuse Service**

**Shawn Bent
Young Hackney Substance Misuse Team leader
shawn.bent@hackney.gov.uk
020 8356 6923**

**Service Contact Details:
Advice and Referral Line 020 8356 7377
Monday – Friday 9am to 9pm
Direct Email:
YHSMS@Hackney.gov.uk**

