

---

# GCSE GEOGRAPHY

## Resources for Paper 3 Geographical Applications

---

To be issued to students 12 weeks before the date of the exam.

### Additional specimen

This booklet contains three resources as follows:

- Figure 1 – The development gap: pages 2–3
- Figure 2 – Bali: pages 4–5
- Figure 3 – The proposed Benoa Bay development: pages 6–7

Figure 1

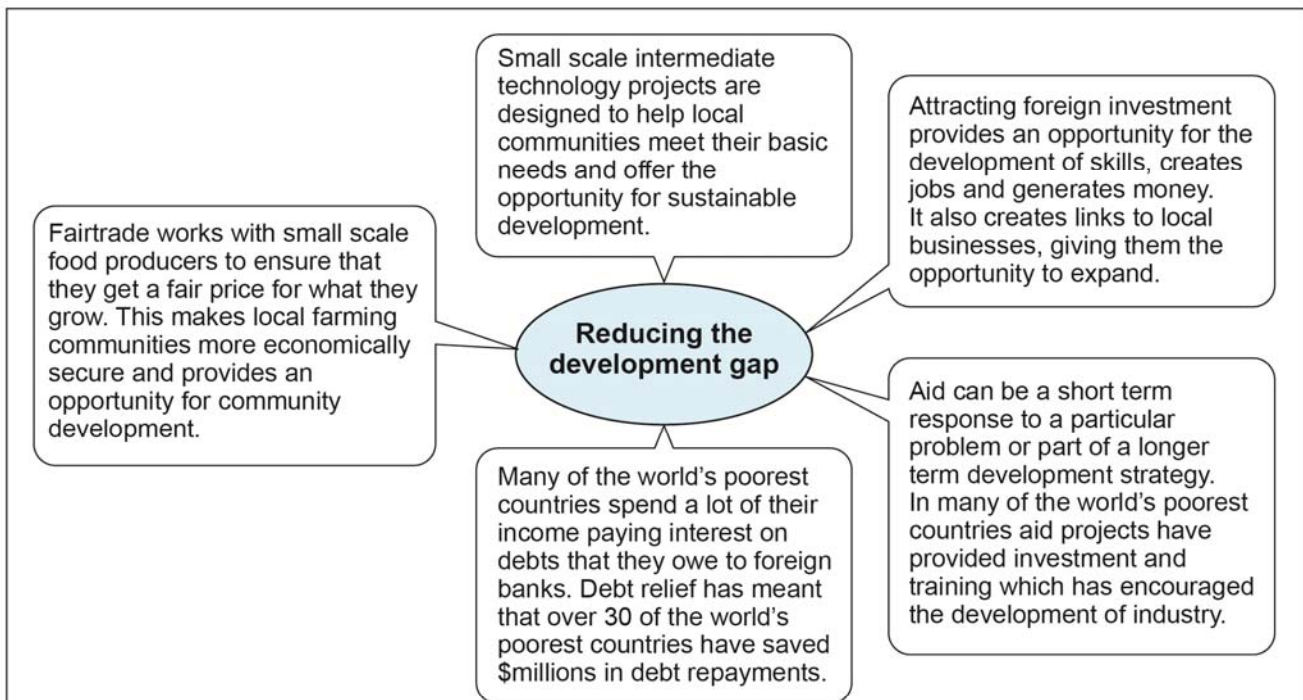
## The development gap

	GNI per capita (US \$)	Access to electricity (% population)	% urban population living in slums	Infant mortality (per 1000 live births)	Internet users (per 100 people)	Access to an improved water source (% urban population)	Access to improved sanitation (% urban population)	Incidence of tuberculosis (per 100 000 people)	Human Development Index (HDI), 2014
Australia	45 320	100	0*	3	85	100	100	6	0.935
Bangladesh	3560	60	55	31	14	87	58	225	0.570
Bolivia	6710	90	44	31	59	90	61	117	0.662
Brazil	15 050	99	22	15	45	98	88	41	0.755
Haiti	1760	38	74	52	12	58	34	194	0.483
India	6030	79	24	38	26	94	63	217	0.609
Indonesia	10 700	96	22	23	22	87	72	394	0.684
Japan	43 210	100	1*	2	93	100	100	17	0.891
Kenya	3070	23	56	36	46	63	31	233	0.548
Malawi	1140	10	67	43	9	90	47	193	0.445
Norway	65 430	100	0*	2	97	100	98	6	0.944
UK	40 900	100	2*	4	92	100	99	10	0.907
USA	57 540	100	4*	6	75	99	100	3	0.915

\* Estimate

Human Development Index (HDI),  
Global range 0.350 – 0.944

**Figure 1 continued**  
**Reducing the development gap**



### Tourism and poverty reduction

In many countries tourism generates significant foreign currency earnings and creates many direct and indirect job opportunities. Tourism accounts for 6% of the world's exports of services and is the fourth largest global industry. In many countries tourism is the most sustainable option for economic development. It can directly benefit poorer people through employment of local people who provide goods and services to visitors.

In recent years tourism has seen a growing range of destinations, with arrivals in developing countries increasing significantly. In 2011 arrivals to developing countries accounted for 46% of total international arrivals. Here are some facts;

- Tourism is the first or second most important source of export earnings in 20 of the world's 48 poorest countries.
- In many LIC/NEE countries tourism can account for over 20% of GNI.
- Rural areas often have a comparative advantage for tourism while being at a disadvantage in most other economic sectors.
- Tourism is a labour intensive industry with many activities suited to women, young people and disadvantaged groups. Many tourism jobs are accessible to the poor as they require limited skills.
- Spending by tourists can benefit a wide range of sectors such as agriculture, handicrafts, transport and other services.

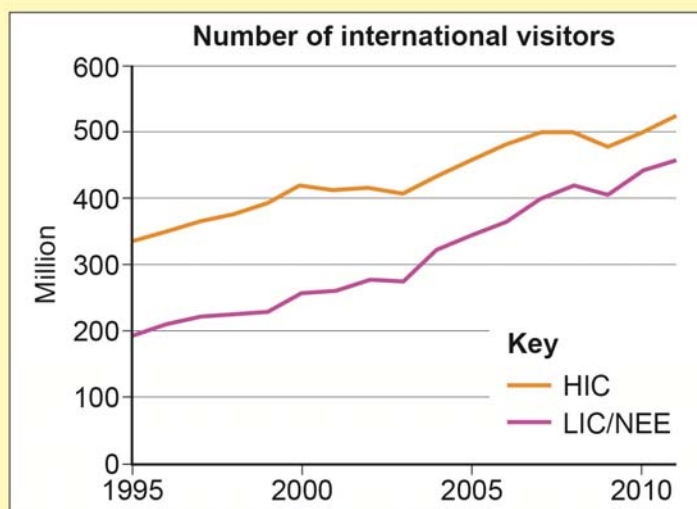
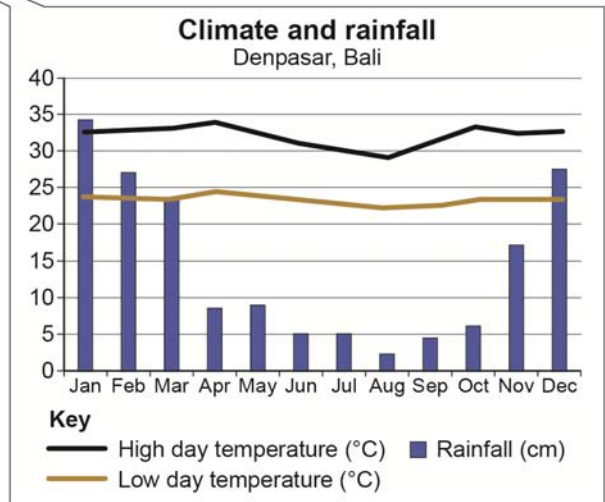


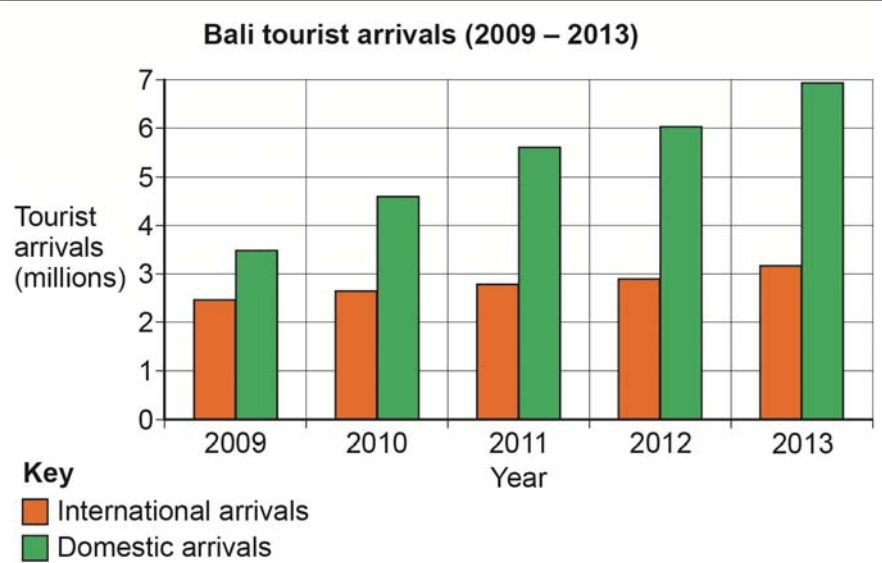
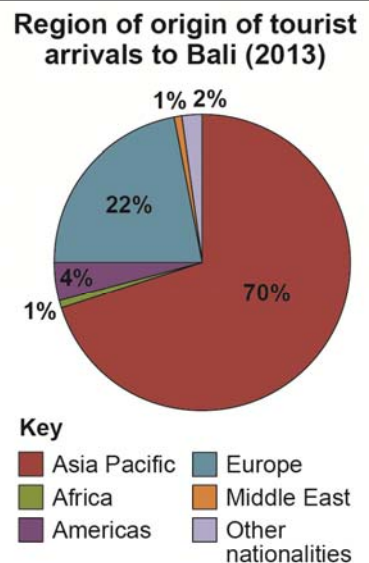


Figure 2

Bali



Bali is an area of varied landscape, with beautiful sandy beaches and mountain peaks, the highest of which is Mount Agung, an active volcano over 3000 metres high. The coastal area is part of the Coral Triangle which has one of the highest rates of marine biodiversity in the world with over 500 coral building species.



**Figure 2 continued**  
**Bali**



### **BALI – PARADISE LOST AND FOUND**

Recently there have been a mass of articles in the international press about the state of the sea around Bali and issues related to pollution and the problem of household and industrial waste. The officials in Bali place the blame on monsoons and waste being washed up from other places, but it is clear that Bali has a waste disposal problem and finds it difficult to manage the large influx of seasonal visitors. Because of this the rubbish builds up on beaches, in rivers and in unofficial landfill sites across the island.

Bali is experiencing rapid economic development and an increasing level of waste has accompanied this development. Tourism has been allowed to develop without the infrastructure being put in place to manage the waste that it creates. There is a simple way of dealing with this problem. Firstly, investing in better waste management will help to ensure that Bali can move to a more sustainable model of tourism. Secondly, changing the pattern of tourism from quantity to quality will reduce the stress on the environment caused by the continued growth of low-cost mass tourism.

Tourism development cannot be halted, but it can be managed so that destinations work with the environment to reduce the terrible toll of mass tourism.





Figure 3

## The proposed Benoa Bay development

A plan has been proposed to develop an 838 hectare site on land reclaimed from Benoa Bay, on the southern tip of Bali. The proposed development, to be known as Nusa Bena, will include villas, apartments, luxury hotels, a Disneyland- style theme park, a yachting marina and a botanical garden.

### REVITALISATION OF BENOA BAY

“A sustainable development project that integrates Balinese culture and traditional customs in the development of resorts, community areas, residential clusters and a theme park to become the new, iconic destination in Bali. The whole development revolves around respect for the local culture and environment in order to create an eco-sustainable development”.

*Nusa Bena (development agency)*

#### Facilities

##### First class public facilities

including schools, health centres, modern services and infrastructure which will ensure a good quality of life for people in Nusa Bena.

**Sustainable infrastructure** with an emphasis on the sustainability of energy and water sources and effective waste management. Urban design will not only reduce the carbon footprint but also allow for efficient use of resources and guarantee a clean and healthy environment.

**Connectivity.** Bena Bay is easily reached from the airport and key tourist areas such as Kuta and Nusa Dua. Efficient public transport will encourage environmentally friendly transport and bicycle and pedestrian routes are included in the plan.

**Green Living Environment.** The developers are dedicated to providing a significant amount of green space and will work with the Mangrove Care Forum to revitalise areas of mangrove forest. The aim is to provide a healthy and green living environment.





Figure 3 continued

## Different views about the proposed Benoa Bay development

**BENOA BAY PROJECT WILL REVITALISE THE AREA**

The Benoa Bay development is aimed at high end tourists who spend a lot of money. It will be an integrated resort which will revitalise the whole bay, bringing increased opportunities to the local fishing industry and a wide range of other businesses in an area of high seasonal unemployment. It will be built with careful consideration to the environment and will help to clean up one of the most polluted waterways in the area which is currently surrounded by garbage strewn mangrove forests. The newly developed facilities will benefit local people and the plan may also include flood protection measures against storms and possible tsunamis.

**MOUNTING OPPOSITION TO BALI TOURISM PROJECT**

Thousands of people gathered to demonstrate against the proposal to build a mass tourism resort in Benoa Bay. Environmental groups say that the newly created islands in the bay will cause flooding on a massive scale because the capacity to cope with flood waters in the bay will be reduced. Local people have had enough of large scale developments which create overcrowding and increase levels of pollution while also disrespecting local traditions. Environmentalists go on to suggest that the development will create a potential ecological disaster as building work will disturb silt which will then swamp the fragile reefs and mangroves.

**POVERTY IN BALI**

Despite welcoming more than 3 million visitors a year many of Bali's inhabitants are living in extreme poverty. In more remote areas away from the glittering five star hotels, local people lack access to education, clean water and even electricity. Many men leave these areas to find jobs in the tourist resorts, disrupting families and communities. Those that do find work often earn very little and the influx of tourists pushes up the price of basic goods beyond what local people can afford. Tourism has been called both "a disaster for the poor" and "the island's life blood". That is the dilemma facing Bali.

**THE PRICE OF TOURISM DEVELOPMENT**

The proposed development of Benoa Bay has made many people reflect on the true cost of tourism. In this part of Bali the growth of tourism has put enormous pressure on water systems. During dry periods there are increasing threats of water shortages. Increasing amounts of farmland are being used to build new resorts, reducing the amount of locally grown food. The huge influx of foreign visitors is threatening local culture and creating conflict within local communities. Supporters of the proposed Benoa Bay development suggest that it will create 150 000 jobs. Where are all of these extra workers likely to come from and where will they live? At a time when hotel occupancy rates are only about 65–70%, building new resorts will only take business away from other areas. What Bali needs are a number of smaller, totally sustainable tourism projects in parts of the island which are less developed and offer few other opportunities.

**TURNING BALI INTO THE NEW PALM ISLANDS**

Local people are protesting against the prospect of a massive tourism development which will turn a semi-enclosed harbour into a kind of "Palm Beach". The protesters say that the development will ravage sacred Hindu sites, increase local flood risks and disturb one of the most valuable environments in southern Bali. The company proposing the development insist that it aims to attract international tourists who spend at least \$300 a day, moving Bali away from the model of mass cheap tourism that has created social and environmental problems in other areas.

Acknowledgement of copyright-holders and publishers

Permission to reproduce all copyright material has been applied for. In some cases, efforts to contact copyright-holders have been unsuccessful and AQA will be happy to rectify any omissions of acknowledgements in future papers if notified.

Figure 1: ©  
©  
©

Figure 2: ©  
©  
©

Figure 3: ©