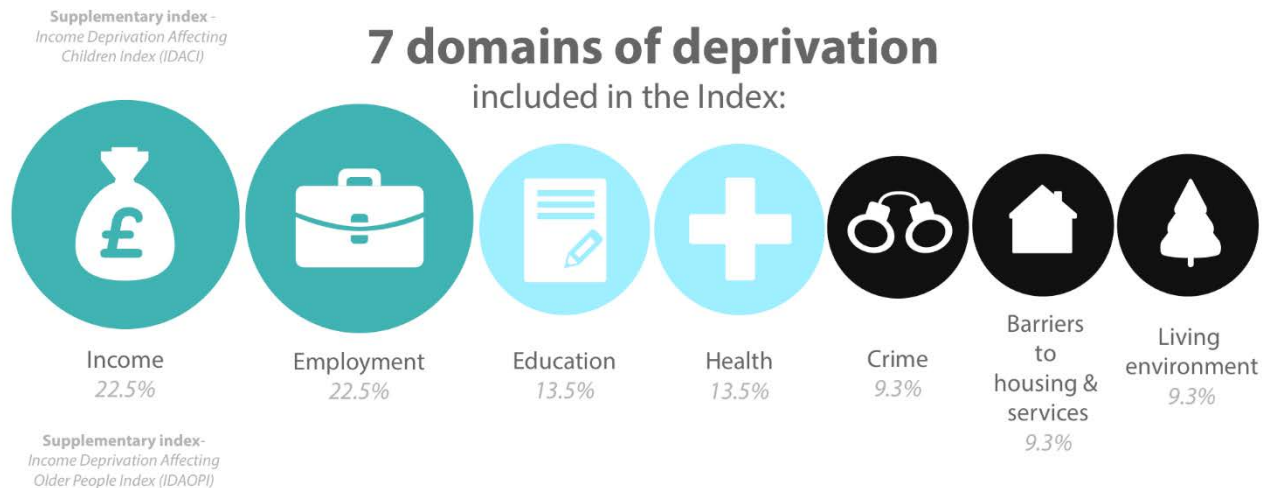


Regeneration – Task one – How do we define deprivation?

Deprivation can be a complicated and dynamic factor to measure.



Carry out an investigation into your local area over the last 20 years to answer this question -

To what extent has my local area experienced a decline in deprivation?

For each aspect of deprivation see what information you can find out about how it has changed over the last ten years. You can order this in a table or write a small paragraph about each one.

Here are some useful sites you can use. You can focus on the 2001 and 2011 census's as they will be most useful.

<https://www.nomisweb.co.uk/>

<https://www.ons.gov.uk/census/2011census/2011censusdata>

<https://datashine.org.uk/#table=QS411EW&col=QS411EW0007&ramp=YIOrRd&layers=BTTT&zoom=12&lon=-0.0486&lat=51.5416>

You can also see if you can find any historical photos or oral accounts of the area.

Task Two – Why do we need regeneration?

Some areas of the UK have undergone deindustrialisation which has resulted in generational unemployment and poverty - reading the article and using your own knowledge and research, add labels to the time line to explain why some areas of the UK have undergone industrial decline.

The guardian – Why doesn't Britain make anything anymore?

<https://www.theguardian.com/business/2011/nov/16/why-britain-doesnt-make-things-manufacturing>

Include

- Place names and examples of factory/mine closures
- Facts and figures (unemployment rates/ population changes/average wages)
- Influential Policy changes
- Global economic trends



Task 3 – Evaluating successful regeneration

The redevelopment of the Kings Cross area of London is a multi-billion-dollar project – using the articles and links below evaluate the success of the redevelopment.

<https://www.theguardian.com/artanddesign/2018/feb/09/gasholders-london-kings-cross-rebirth-google-hq> - The £3bn rebirth of King's Cross: dictator chic and pie-in-the-sky penthouses (The Guardian)

<https://www.kingscross.co.uk/the-story-so-far> - Official website

https://en.wikipedia.org/wiki/King%27s_Cross_Central - wiki

The Egan Wheel provides a structure to evaluate the success of a community – for each section of the wheel make a judgement supported with facts from your research on how successful the redevelopment of Kings Cross has been? Then answer this question –

With reference to a named example you have studied evaluate the success of a major regeneration scheme.

