

An Inspector Calls by J. B. Priestley

Lesson 1 - Context

Knowledge Organiser Questions

1. Name the character who fits this description: “Head of the Birling family and a man with traditional views. He is a hard-headed businessman, which has led to financial success.”
2. Name the character who fits this description: “The maid of the Birling family.”
3. In act one, we find out that Mr. Birling, Sheila and Gerald have all encountered Eva Smith/Daisy Renton. How?
4. List as many physical skills as you can.
5. What is a backlight in lighting?

Check your Answers

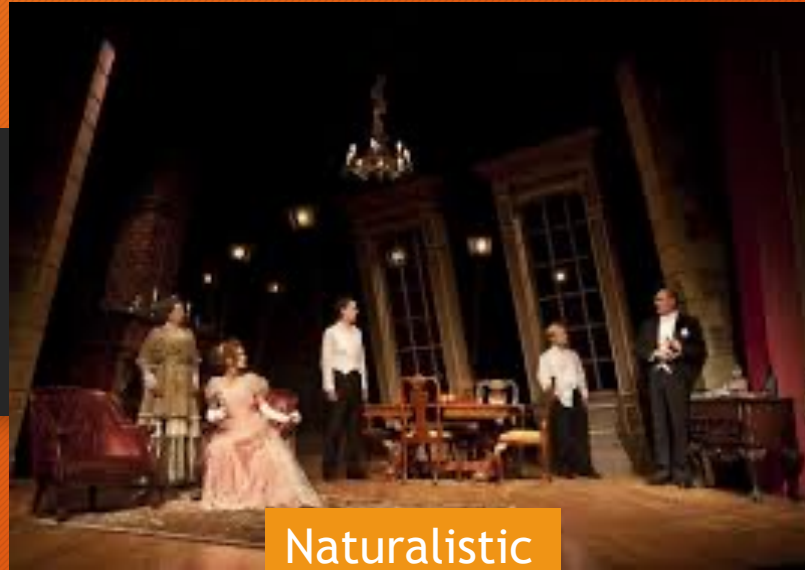
1. Mr. Birling
2. Edna
3. Mr. Birling fired her from the factory for asking for a pay rise, Sheila influenced a store to fire her because Eva looked better in a dress than Sheila, Gerald had a relationship with Eva/Daisy.
4. Facial Expression, Eye contact, Posture, Gesture, Movement, Mannerism, Body Language, Stance, Gait, Speed, Stillness
5. A Light coming from upstage, behind the scenery or performers

Socialism



- Socialism is a political and economic theory of social organization which advocates that the means of production, distribution, and exchange should be owned or regulated by the community as a whole. It is ideologically linked to Communism.
- It is usually seen as the opposite of capitalism which is an economic and political system in which a country's trade and industry are controlled by private owners for profit, rather than by the state.
- Red is often associated with Communism and Socialism.
- Which characters might represent socialism and capitalism?

Naturalism



Naturalistic

VS



Non-Naturalistic

- Naturalism is a style of theatre created by Konstantin Stanislavski in late 19th to early 20th century.
- It is meant to be a reflection of real life (a slice of life) on stage.
- Konstantin Stanislavski worked with the Moscow Art Theatre.
- How might a naturalistic production of *An Inspector Calls* vs a non-naturalistic one change the interpretation of the play?

Task

- Write an introductory paragraph to a 9 mark question about props and stage furniture. Including the context in which the play was first written and performed.
- Include:
 - the year and location of the first production
 - an issue or idea you want to highlight for the audience through your design (social class, socialism, gender inequality, etc.)
 - link this issue back to the themes Priestley wanted to highlight
- Whatever you do not finish will be homework.

An Inspector Calls by J. B. Priestley

Lesson 2 - Set & Props/Stage Furniture

Knowledge Organiser Questions

1. Name the character who fits this description: “The mysterious person is able to pull apart every character with his apparent omniscience. He has little respect for the social status of those he questions, putting his duty first.”
2. Name the character who fits this description: “Daughter of Mr. and Mrs. Birling. She is engaged to Gerald and is initially regarded as selfish, but changes, realizing her responsibility towards others.”
3. In act two, we find out that Mrs Birling and Eric know Eva Smith. How?
4. In act two, Sheila gives something important back to Gerald. What is it?
5. List as many vocal skills as you can.
6. When you break down a costume or set piece, what are you doing to it?

Check your Answers

1. Inspector Goole
2. Sheila
3. Mrs Birling turned away a pregnant Eva from her charity, and Eric got Eva pregnant.
4. Her engagement ring
5. Pitch, pause, pace, intonation, tone, volume, accent, monotone
6. You are making it look old and/or worn.

Task- Look at the following pictures paying attention to:

- 1) Style
- 2) Materials
- 3) Colours
- 4) Symbolism
- 5) Levels
- 7) Atmosphere
- 8) Props and stage furniture
- 9) Transitions
- 10) Health and safety
- 11) Time and location

- Style
- Colour
- Material
- Time
- Location
- Props/Stage furniture
- Health and Safety



- Symbolism
- Levels
- Props/Stage furniture
- Transitions
- Health and Safety
- Time and location
- Atmosphere



What is set and what is props/stage furniture?

Set

Props and stage furniture

Flats
Tables
Chairs
Telephone
Port glasses
Flies
Rostra
Cigar box
Fireplace
Picture of Eva
Cyclorama
Gauze

Task - Fill in a table for a set design with 2 more pieces of set, whatever you don't finish is homework

What is it?	Description 1	Description 2	Description 3	Reason
Ex. Flat	Colours are dark green and dark woody brown	Materials are wallpaper on top, wood panels on bottom	Style is Naturalistic and period with lots of details like flower pattern in the wallpaper and wood crown moulding	To show wealth and status of Birlings, these are normal styles of the time, these are natural materials used at the time

Homework

- Finish the table answer the 9 mark question below.
- As a director, discuss how you would use **props/stage furniture** to bring this extract to life for your audience. You should refer to the context in which the text was created and first performed.
- The extract is p.47-49 (the end of act 2)

An Inspector Calls by J. B. Priestley

Lesson 3 - Staging, Stage Directions and Stage Space

Knowledge Organiser Questions

1. Name the character who fits this description: “Married to Mr. Birling. She enjoys being regarded as a charitable woman, but her prejudices about the working classes reveal her true feelings.”
2. Name the character who fits this description: “Son of Mr. and Mrs. Birling. Regarded as a disappointment, he quickly recognizes his responsibility and feels guilty about the way he treated Eva.”
3. In act three, Mr Birling telephones the Chief Constable and discovers what?
4. Draw and label the stage diagram.

1. Don't forget to place the audience.



1. When you cross fade sound or lighting states, what are you doing?

Check your Answers

1. Mrs. Birling

2. Eric

3. That there is no Inspector Goole

4..

USR	USC	USL
CSR	CS	CSL
DSR	DSC	DSL

5. Bringing Audience sound or lighting state up to replace the old one on a fade

Staging

- As a class, we will read through pages 50-51 in your Inspector Calls revision guides
- Take notes in your book

Stage Directions and Stage Space

- As a class, we will read through pages 38-39 in your purple revision guides
- Take notes in your book

What is Staging and what is stage directions and stage space in the exam?

Staging (9 and 14)

Stage Directions/Stage Space (12)

1. Exits and entrances
2. Upstage/Downstage
3. Where you are on stage
4. Audience Sightlines
5. End on
6. Traverse
7. Proxemics
8. Levels

Task

1. Look at the still image. What is the benefit of this type of stage?
2. Where could the entrances and exits be?
3. Where might the sightlines be?

Task

1. Where is the entrance for Eric?
2. How are they using stage space?

- Act out the scene from page 50-51. Stop at the end of the Inspector's line "Now then".
- You will need:
 - Director - tell you where to stand and how to use the stage space
 - Eric
 - Inspector
 - Sheila
 - Mr Birling
 - Mrs Birling

Task - Create and fill out a table for a 12 mark directing question (only talking about stage directions and stage space) using the same extract.

Line	What will you tell the actor to do?	Why will you tell the actor to do that?
1.		
2.		
3.		

Homework

- Finish the table answer the 9 mark question below.
- As a director, discuss how you would use **staging** to bring this extract to life for your audience. You should refer to the context in which the text was created and first performed.
- Use the extract on pages 50-51 that you worked with today.

An Inspector Calls by J. B. Priestley

Lesson 4 - Lighting

Knowledge Organiser Questions

1. Name the character who fits this description: “Son of a wealthy businessman and engaged to Sheila. While his instinct is to agree with the Birling’s approach, he also recognizes his responsibilities to others. He initially treated Daisy/Eva honourably, but then took advantage.”
2. Which character would have a regional midland’s accent? What does that show about his character?
3. In act three, we find out that Eric tried (unsuccessfully) to give Eva money. Why?
4. What are proxemics?
5. What is a period costume?

Check your Answers

1. Gerald
2. Mr. Birling, that he grew up working class
3. Because he got Eva pregnant and wanted to help her
4. Where you are in relation to others onstage
5. A period costume is a costume which fits the time period of the play
(Sheila may wear a period costume for 1912 because that is when the play is set)

Lighting

- As a class, we will read through pages 58-60 in your Inspector Calls revision guides
- Take notes in your book

Look at the following images and take notes on...

- 1) Style
- 2) Action on stage
- 3) establish time and location
- 4) characterization
- 5) mood and atmosphere
- 6) symbolism
- 7) health and safety

What does this tell us about lighting design? How can we show setting?

- It is an evening in spring, 1912.
- The lighting should be pink and intimate until the Inspector arrives, and then it should be brighter and harder.

Task - Fill in the table with lighting design information
 Use the extract on p.10 *“We hear a sharp ring of a front doorbell...”* until p.11

What is it?	Colours	Intensity	Where on stage/ Cover	Other? Timings, gobos, angles	Reason
Light 1 in lighting state					
Light 2 in lighting state					
Lighting cue					

Task - Whatever you don't finish will be homework

- Answer the 9 mark question below.
- As a director, discuss how you would use **lighting** to bring this extract to life for your audience. You should refer to the context in which the text was created and first performed.
- Use the extract on p.10 “*We hear a sharp knock at the door...*” until p.11 “*Yes. Sit down, Inspector.*” Keep in mind the stage directions from the beginning of the play!

An Inspector Calls by J. B. Priestley

Lesson 5 - Sound

Knowledge Organiser Questions

1. What year, what style and where was the play first performed?
2. Even though Eric and Gerald are both part of the younger generation, they are very different. Give 2 differences between Eric and Gerald.
3. In act one, the play starts with a celebration. What are the Birlings and Gerald celebrating?
4. What is intonation?
5. What is the difference between a diegetic and a non-diegetic sound?

Check your Answers

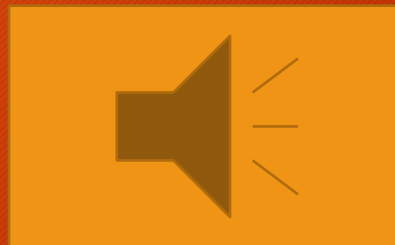
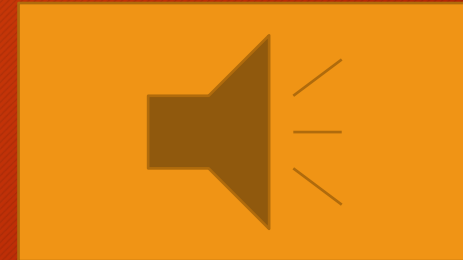
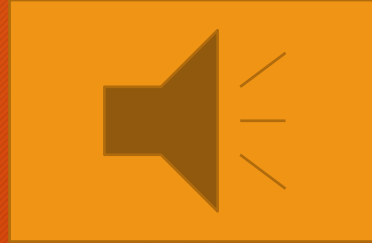
1. 1945, Naturalism, Moscow and St. Petersburg/Leningrad
2. Eric drinks too much and Gerald doesn't, Eric is part of the Birling family and Gerald is part of the Croft family, Gerald is upper class and Eric is more middle class, Gerald is engaged and Eric is not, Eric is in his early 20s, Gerald about 30, etc
3. Gerald and Sheila's engagement
4. Change in pitch or loudness of the voice
5. Diegetic sounds are heard by characters on stage, non-diegetic sounds are not heard by characters on stage

Sound

- As a class, we will read through pages 56-57 in your Inspector Calls revision guides
- Take notes in your book

Listen to the following sounds and take notes on...

- 1) Style
- 2) Setting and Context
- 3) Reinforce Actions
- 4) Mood and Tension
- 5) Characterisation
- 6) Symbolism
- 7) health and safety



Task - Fill in the table with sound design information
 Use the extract on p.10 “*We hear a sharp ring of the front doorbell...*” until p.11

When is the sound	What is the sound	Describe the sound	Reason
Line	Soundscape? Music? Doorbell? Other?	Volume Fades? (if it's a soundscape) What sounds can be heard? Diegetic? Functional, Atmospheric, Incidental?	

Task - Whatever you don't finish will be homework

- Answer the 9 mark question below.
- As a director, discuss how you would use **sound** to bring this extract to life for your audience. You should refer to the context in which the text was created and first performed.
- Use the extract on p.10 “*We hear a sharp knock at the door...*” until p.11 “*Yes. Sit down, Inspector.*” Keep in mind the stage directions from the scene!

An Inspector Calls by J. B. Priestley

Lesson 6 - Performance Skills (physical and vocal)

Knowledge Organiser Questions

1. Which 3 characters do we find out are connected to Eva Smith in act 1?
2. Which 2 characters do we find out are connected to Eva Smith in act 2?
3. What “arrangement” did Gerald make for Eva Smith that allowed for their relationship to develop?
4. What information does the audience find out on the last line of the play?
5. What is stillness?
6. What is a gauze?

Check your Answers

1. Mr Birling, Sheila, Gerald
2. Eric and Mrs Birling
3. He arranged for her to stay in a friend's rooms
4. Eva Smith has actually died, and the events were all real (even if Inspector Goole was not)
5. Moving slowly or not moving at all
6. A cloth that, when lit from different angles, can hide or show what is behind it

Performance skills

- As a class, we will read through pages 6, 10 and 12 in your purple revision guides
- Take notes in your books

What the exam might ask for

- 4 mark questions - physical skills, vocal skills, non-verbal communication
- 6 mark question - performance skills (give a mix of physical and vocal skills)
- 12 mark question - physicality, voice, stage directions and stage space

Act out the following scene

Perform the scene between p 70 “Mrs. Birling: (*smiling*)
And I must say Gerald...) until the end.

Consider your use of physical and vocal skills.

We will watch some back and give feedback.

What were physical or vocal skills or non-verbal communications that you used? Why and how?

Task - Fill in the table with performance skill information. Use the extract on p.70-72

This would be one paragraph of a 12 mark answer.

	When is it used (line)	Describe the skill	Reason
Physical			
Vocal			
Stage directions /Stage space			

Task - Whatever you don't finish will be homework

- Answer the 12 mark question below using the extract on pages 70-72.

Sheila is angry with her family.

As a director, discuss how the performer playing this role might demonstrate this to the audience in this extract and in the complete play. You must consider:

Voice, physicality, stage directions and stage space

An Inspector Calls by J. B. Priestley

Lesson 7 - Costume

Knowledge Organiser Questions

1. Pick the person who is higher status in the pair?

- A. Sheila and Gerald
- B. Eric and Mr Birling
- C. Edna and Ms Birling
- D. Eric and Edna

2. List two physical or vocal skills which could show that Gerald is from upper class and Edna is working class. How would they show this?

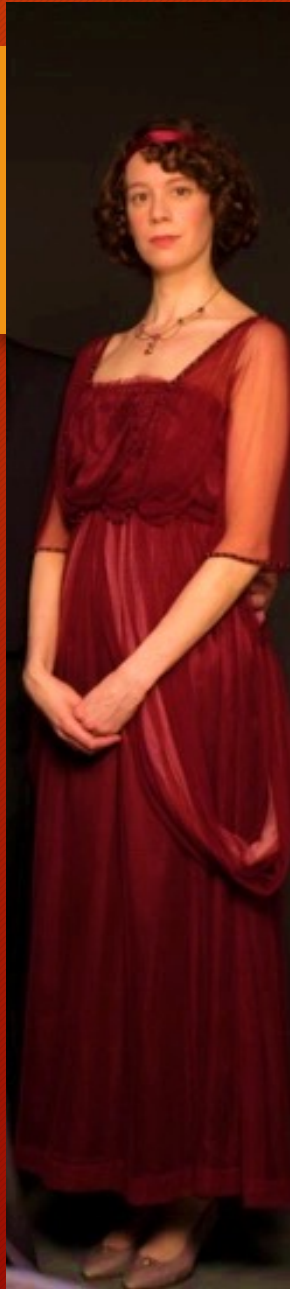
3. Which room in the Birling household does the entirety of the play take place?

4. What is Gait?

5. If I were making a period costume for Sheila, what would that mean?

Check your Answers

- 1.A. Gerald, B. Mr Birling, C. Mrs Birling, D. Eric
- 2.Accent - Gerald's could be posh while Edna's is regional, Posture - Gerald could stand up straight while Edna could hunch
- 3.Dining Room
- 4.A person's manner of walking
- 5.I am making a pre-world war one style costume for Sheila (fitted sleeves, floor length skirt - average width, loose fitting bodice, columnal silhouette, possibly gloves, loose wavy curls tied up, possibly a necklace of average length)



Costume

- As a class, we will read through pages 61-63 in your Inspector Calls revision guides
- Take notes in your book

Look at the pictures and take notes on...

- 1) Style
- 2) Setting and Context
- 3) Hair and Makeup
- 4) Fabric and Colour
- 5) Characterisation and Status
- 6) Symbolism
- 7) Health and Safety



Task - Fill in the table with costume design information
Use the extract on p.10 “*We hear a sharp ring of the front doorbell...*” until p.11

What is the costume item	Fabric and Colour	Describe the Style	Reason

Task - Whatever you don't finish will be homework

- Answer the 14 mark question below.
- As a designer, discuss how you would use **costume** to enhance the production of this extract for the audience. (Don't forget to mention health and safety!)
- Use the extract on p.10 "*We hear a sharp knock at the door...*" until p.11 "*Yes. Sit down, Inspector.*"

An Inspector Calls by J. B. Priestley

Lesson 8 - Roles of the theatre

Knowledge Organiser Questions

1. In act 1, which 3 people were revealed to have met Eva Smith/Daisy Renton?
2. In act 2, which 2 people were revealed to have met Eva/Daisy?
3. In act 3, what information does Mr. Birling discover when he calls the morgue?
4. What are mannerisms?
5. What are sightlines?

Check your Answers

1. Mr. Birling, Sheila and Gerald
2. Eric and Mrs Birling
3. No one has been brought to the morgue for suicide recently
4. A habitual gesture or way of speaking or behaving
5. Imaginary lines of sight that show what areas of the stage are visible to the audience

Lesson Objectives

- To recall the roles of a director and designers
- To understand the difference when answering a question as a director or designer

Sound

- As a class, we will read through pages 26, 41, 48, 55 and 63 in your purple revision guides
- Take notes in your book

Roles of the theatre:

Strength: Big picture - how does this fit with the overall vision and themes?



Strength: Area specific knowledge - what my production element communicate to the audience?

Whose Role Is It Anyway?

1. Director	2. Designer

I'll read off a list of responsibilities, you tell me where it goes by holding up a one or a 2.

Task - Whatever you don't finish will be homework

- Read through the 9 and 14 mark exemplars.
- Find at least 3 differences between the director and the designer answer and write them in your books.
- Then we will share as a class.

Fill in the table with information you would include about each point for a 9 or 12 mark question.

Point	9 Mark	12 Mark
Ex: One light from lighting state at the beginning of the play	Pink tint, inside the dining room, wash, medium intensity, naturalistic - like original performance	Pink tint, inside the dining room, wash using parcans, medium intensity, from high and in front (none on side to reduce pink shadows), safety cables used for extra protection, naturalistic
1: Sheila's Dress		
2: Dinning Room Table		
3: One light from lighting state at the end of the play		

An Inspector Calls by J. B. Priestley

Lesson 9 - 9 mark question

Knowledge Organiser Questions

1. Priestley says the lighting should start out as what colour at the beginning of the play?
2. When and how does Priestley want this lighting change?
3. Name two props or pieces of set that Priestley mentions in the opening stage directions.
4. What are proxemics?
5. Give a name for a type of stage with the audience on one side.

Check your Answers

1. Pink
2. When the inspector arrives, it should become brighter and harder
3. Pick 2: Solid furniture, dining-table, fireplace, small table telephone, chairs, flats, dessert plates, champagne glasses, decanter of port, cigar box, cigarettes, port glasses
4. Where you are in relation to others
5. I will accept end-on, proscenium or proscenium arch

Lesson Objectives

- To understand the requirements of a 9 mark question
- To be able to finish a 9 mark question

I do...

- I will write out the introduction and first paragraph of a 9-mark question. Copy what I am writing. Listen to my thought process.

We do...

Discuss with a partner what other options you would like to write about, you can look through the examples to give you a hint.

Jot down which other points you'd like to make.

You do... finish it for homework

- Answer the rest of the question using the extract on p. 38 “Gerald: It’s hard to say...” until p. 40 “Sheila: All right.”
- Tips:
 - Give enough detail that someone else could picture what you are saying
 - Give reasons for each of your details (why is the dress yellow? Why is the suit velvet? Why is the fit tight? etc.)
 - Frequently mention the original performance conditions and Priestley’s intentions
 - Make it clear you are the director

An Inspector Calls by J. B. Priestley

Lesson 10 - 12 mark answer

Knowledge Organiser Questions

1. What two economic ideologies/systems are represented in this play?
2. We find out in act 1 that Eva Smith was sacked from Mr. Birling's factory. Why?
3. Mr. Birling makes 2 calls in act 3 and he finds out 2 pieces of crucial information. What are they?
4. Give 2 possible descriptions of the gait of someone who is angry.
5. When you backlight something, what are you doing?

Check your Answers

- 1.Socialism and Capitalism
- 2.Because she asked for a raise, there was a strike and she was named as a ringleader
- 3.There is no Inspector Goole, no girl has been brought to the morgue after drinking disinfectant
- 4.Stomping, walking quickly
- 5.Lighting it from an upstage position (lighting it from behind)

Lesson Objectives

- To understand the requirements of a 12 mark question
- To be able to finish a 12 mark question

I do...

- I will write out the introduction and first paragraph of a 12-mark question. Copy what I am writing. Listen to my thought process.

We do...

Discuss with a partner what other options you would like to write about, you can look through the examples to give you a hint.

Jot down which other points you'd like to make.

You do... finish it for homework

- For this question, use the extract from p. 38 “Gerald: It’s hard to say...” until p. 40 “Sheila: All right.”
- Tips:
 - Pick one quote and give a physical, vocal and staging for each
 - Give enough detail that someone else could picture what you are saying
 - Give reasons for each of your skills used
 - Give context for the rest of the performance

An Inspector Calls by J. B. Priestley

Lesson 11 - 14 mark answer

Knowledge Organiser Questions

1. In act 1, we find out Sheila got Eva sacked from her job. Why?
2. In act 2, we find out Mrs. Birling turned away Eva Smith from her charity. Who did Mrs. Birling think should take care of Eva Smith? (You can give a name or description as Mrs. Birling did not discover this person's name until the end of act 2.)
3. In act 3, Eric gets angry with his mother. Why?
4. List two things breaking eye contact might suggest.
5. What is a rostrum? (bonus point if you know the plural form)

Check your Answers

1. Because Sheila was jealous that Eva looked better in a dress than she did.
2. The father of Eva Smith's baby (Eric)
3. Because Mrs Birling turned Eva Smith away from her charity
4. Uncomfortable with the situation, scared of the other person
5. A portable platform (plural is rostra)

Lesson Objectives

- To understand the requirements of a 14 mark question
- To be able to finish a 14 mark question

I do...

- I will write out the introduction and first paragraph of a 14-mark question. Copy what I am writing. Listen to my thought process.

We do...

Discuss with a partner what other options you would like to write about, you can look through the examples to give you a hint.

Jot down which other points you'd like to make.

You do... finish it for homework

- Answer the rest of the question using the extract on pages 70-72
- Tips:
 - Give enough detail that someone else could picture what you are saying
 - Give reasons for each of your details (why is the light green, why is there a gobo, why do you want a slow fade, etc.)
 - Give health and safety/practical information